

PCORI Strategic Overview & Upcoming Funding Announcements



LEAD Coalition Meeting

April 9, 2025

Tabassum Majid, PhD, MAgS
Senior Program Officer



Leading Funder of CER in the United States



PCORI®

- Independent, nonprofit, research funding institute
- Nation's leading funder of patient-centered comparative clinical effectiveness research (CER)
- Widely acknowledged as a leader in driving U.S. clinical research to become more patient-centered
- Provides funding for CER, engagement in research, dissemination and implementation and research infrastructure projects

More than

\$5B

AWARDED

2,400+

**RESEARCH & RELATED
PROJECTS**

Our Mission



Our Mission

Help people make better-informed healthcare decisions, and improve healthcare delivery and outcomes, by producing and promoting high-integrity, evidence-based information that comes from research guided by patients, caregivers, and the broader healthcare community

Patients and Other Partners



- Partners Include**
- Patient and Family Members or Other Unpaid Caregivers of Patients
 - Community Based Organizations
 - Researchers
 - Clinicians
 - Hospital and Health Systems
 - Training Institutions
 - Purchasers
 - Payers
 - Policy Makers
 - Industry

CER Funding Opportunities: Broad and Focused

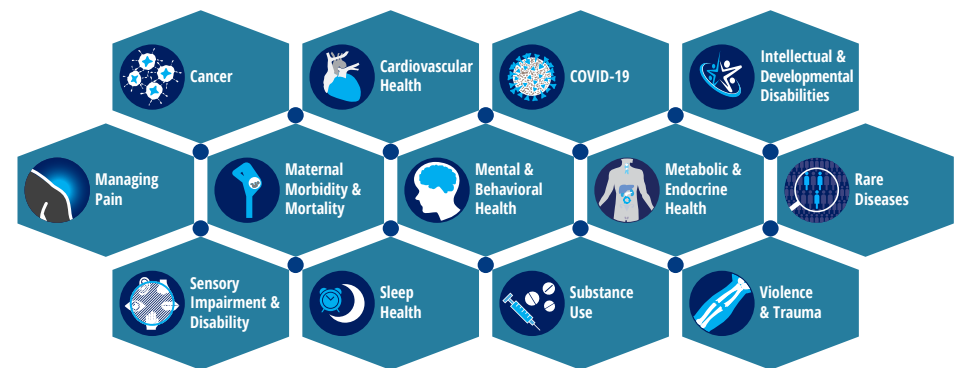
Broad

- Solicits CER proposals on any topic generated by CER community
- Aligned with PCORI's National Priorities for Health

Topic-Focused

- Solicits CER proposals aligned to the Topic Themes
- Emphasize patient-centered needs and creative approaches to close evidence gaps

PCORI'S RESEARCH PROJECT AGENDA TOPIC THEMES





PCORI's Current Portfolio:
Older Adults



Portfolio Spotlight - Older Adults



PCORI HAS AWARDED

\$323 MILLION **63**
TO FUND

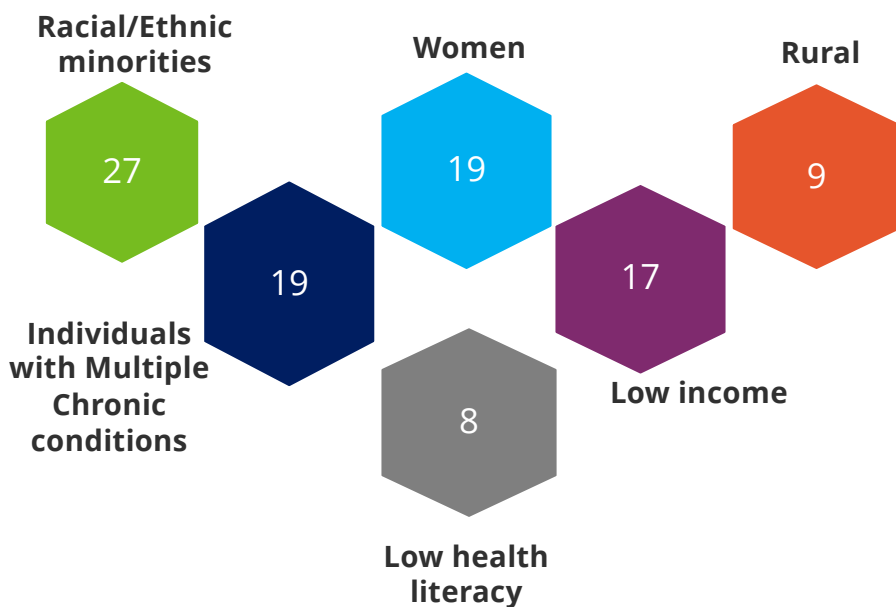
comparative clinical effectiveness research studies
with a focus on
older adults

AS OF MAY 2023

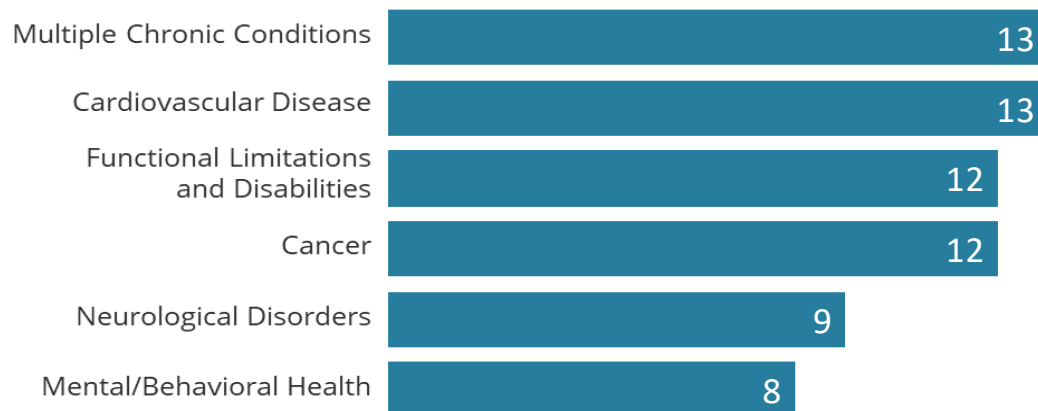
Portfolio Spotlight – Older Adults



Most Studied Populations of Interest



Most Studied Conditions*



**Top conditions studied that affect older adults; projects may address more than one condition. As of May 2023*

Portfolio Spotlight – Older Adults



PCORI HAS AWARDED

\$116 MILLION **18**
TO FUND

comparative clinical effectiveness research studies related to **delirium, dementia and cognitive impairment**



Explore our
portfolio

AS OF JANUARY 2024

Funding Opportunities



Multiple Funding Opportunities

Types of PCORI-Funded Projects

CER Awards

- Fund studies comparing two or more treatments, services or health practices

Invite PWLE

Dissemination & Implementation Awards

- Fund projects to deliver the evidence to those who can use it

Engagement Awards

- Fund projects to bring more patients, caregivers, clinicians and communities into the health research process



Research Funding Opportunities



Phased Large Awards for Comparative Effectiveness Research

Large, meritorious and innovative studies with some risks

Up to \$22M
(for feasibility and full-scale study phases)

Broad Pragmatic Studies

Studies aligned with at least one of PCORI's National Priorities for Health (three funding categories, including PCORnet® studies)

1. Up to \$5M
2. \$5 to 12M
3. Up to \$12M

Topic-Focused

Stakeholder-driven topics, issues and questions of national significance

Variable

Science of Engagement

Development and validation of measures; development and testing of engagement techniques

1. Up to \$1M
2. Up to \$1.5M

Methods

Improve use of AI and ML, improve study design, support data research networks, ethical and human subject protections in CER

Up to \$750K

2025 Funding Cycle LOI Deadlines

Cycle 1: Jan. 14 | Cycle 2: May 13 | Cycle 3: Sept. 23

*All funds and timeline noted above are subject to change

Caregiving Roundtable

November 2024



Convened caregivers, patient advocates, clinicians, researchers, policymakers, and others (50 attendees total) to address key caregiving issues, priorities, and considerations—particularly around Alzheimer’s Disease and Related Dementias (ADRD).

Key Takeaways

- Caregiving needs evolve, impacting caregivers’ emotional, financial, mental, and physical well-being.
- There is a critical shortage of providers equipped to address diverse caregiving needs.
- Underrepresented groups and communities often lack sufficient research and resources.
- Scalable, evidence-based interventions (e.g., physical activity, social engagement, and innovative care models) show promise but need greater investment, faster implementation, and broader access.
- Collaboration across agencies, support for strength-based care models, and improved dissemination strategies are vital to meet growing caregiving challenges.

Broader caregiving discussion to continue at the HDDR Advisory Panel on April 11, 2025.

Current Opportunity: ADRD Caregiving SAE



Broad Pragmatic Studies (BPS) PFA (Cycle 2 2025)

- **Special Area of Emphasis (SAE):** *Addressing the Mental and Behavioral Health Challenges of Individuals Living With Alzheimer's Disease and Related Dementias (ADRD) and Their Care Partners*
 - Call for patient-centered CER to improve mental and behavioral health outcomes for individuals with ADRD and their caregivers, comparing behavioral, pharmacological, and care delivery interventions across diverse settings.



Key Dates	
PFA Release	April 1, 2025
Applicant Town Hall	April 8, 2025
Letter of Intent (LOI) Deadline	May 13, 2025
LOI Status Notification	June 10, 2025
Application Deadline	September 3, 2025

Preannouncement Page: <https://www.pcori.org/funding-opportunities/announcement/broad-pragmatic-studies-pcori-funding-announcement-cycle-2-2025>

Engagement Funding Opportunities



Capacity Building

Support projects that help communities increase their ability to participate across all phases of CER

\$300K

Up to 2 Years

Convening Support

Convene communities of interest to explore critical issues related to CER and/or communicate PCORI-funded research findings to targeted communities

\$125K

Up to 1 Year


2025 Funding Cycle LOI Deadlines

Fall: April 1 | Spring: Sept. 29

*Funding opportunities, funds and timeline noted above are subject to change

Contact Information

Tabassum Majid, PhD, MAgS

 • 202-738-3726

 • tmajid@pcori.org

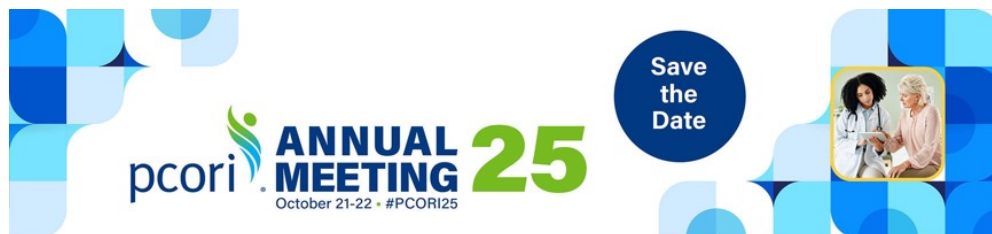
 www.pcori.org

 @pcori

 /PCORInstitute

 PCORI

 /pcori



Thank You!

Get Involved & Stay Connected



Get Involved



Several Ways to Get Involved with PCORI

- Apply to serve on one of PCORI's five Advisory Panels
- Become a Merit Reviewer
- Become a PCORI Ambassador
- Become a Peer Reviewer
- Participate in PCORI Events
- Suggest a Patient-Centered Research Question



PCORI Advisory Panels



Apply or Nominate Someone Today:

- Clinical Effectiveness & Decision Science
- Clinical Trials
- Healthcare Delivery & Disparities Research
- Patient Engagement
- Rare Diseases



Stay Connected



Looking to Stay Current on All Things PCORI?

Sign up to receive our weekly email newsletter and alerts about:

- Funding opportunities
- Results from our funded research
- Webinars, meetings and events
- Our new strategic initiatives and more!

[PCORI.org/Subscribe](https://www.pcori.org/Subscribe)

